

Multi Channel Data Logger



- :: User Friendly Touchscreen Interface
- :: Available in Panel Mount or Portable
- :: State of the art secure Data Logging
- :: 5.7-inch or 8.4-inch 64K color QVGA/SVGA Touchscreen
- :: Easy Operation
- :: Reliable Data Storage
- :: Multi-Channel
- :: Pressure Ranges up to 100,000 Psi and Temperature Input IRTD or T/C)
- :: USB, Local Printer and Ethernet Connections
- :: User Customization Available

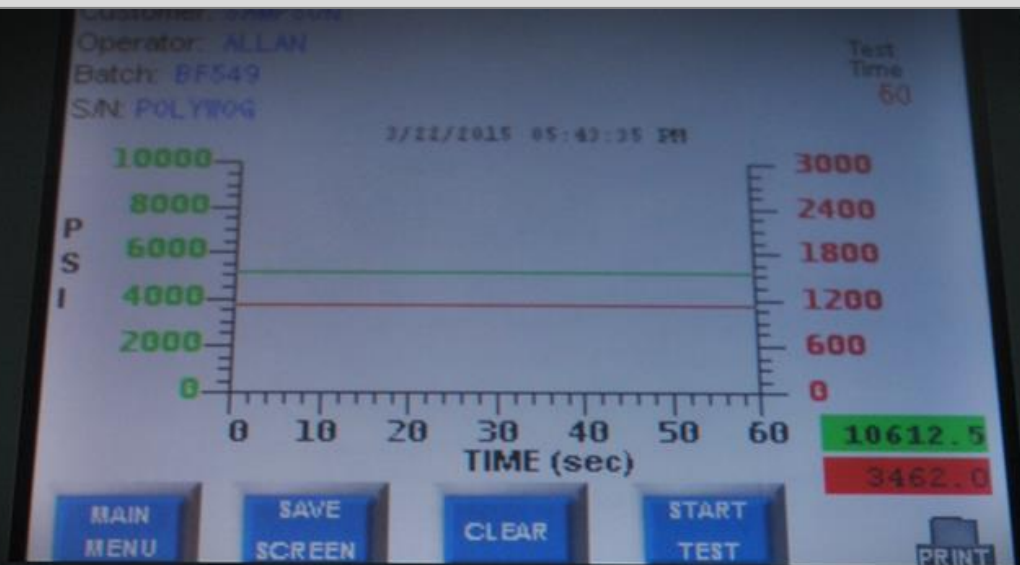
Intuitive Display, Easy Operation

Standard Features

- :: Remote Viewing and Remote Control through the Internet
- :: Full Touchscreen Functionality
- :: Multiple Pressure Sensor or Temperature Input
- :: Zero button for pressure sensor re-zero
- :: 25' cable per pressure sensor
- :: High accuracy up to 0.1% of Full Scale
- :: 110 VAC Powered
- :: Built-in secure 8GB SD card storage with USB port and Ethernet port for easy to transfer or remote storage
- :: Message and alarm input and recordings at console
- :: User input settings
- :: Water and Dustproof
- :: Military Grade Connections
- :: Secure CSV File saving format for spreadsheet software (Microsoft Excel)
- :: Local Print via USB printer support



Intuitive Display, Easy Operation



- 5.7-inch QVGA or 8.4-inch SVGA 64K Color Touch Screen
- Many types of displays such as trend, digital, bar graph, overview, alarm, and historical trend
- Remote viewing of the screen through the Internet
- Multi-functional touchscreen keys
- Start/stop recording by batch, and create data files

Comprehensive selection of measurement types, and exceptional performance

- Input types: Pressure Sensor, DCV, TC, RTD, DI
- Scan interval: 1 s, 125 ms (fast sampling) (Standard Version 1s scan interval)
- Channels: 1 to 16 Channel inputs available (Standard Version 1 channel)
- Measurement accuracy: $\pm 0.1\%$ of full scale

Reliable data storage

- Large (8GB) internal memory
- USB interface
- Binary data storage
- Network enables data redundancy
- Reliable design and construction
- Space-saving design
- Waterproof and dustproof (IP65 compliant)

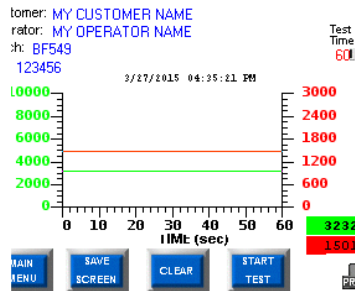
Optional Features:

- Up to 16 inputs
- Automated Measurement and Control Solutions
- Custom Ethernet Support and Setup
- Custom Report and User Interface Design

Intuitive Display, Easy Operation

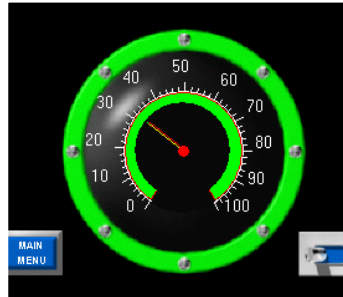
You can use the touchscreen to switch to any of the operation screens. The operation states of memory sampling, alarms, key lock, computation, and other conditions are graphically displayed.

Trend Display



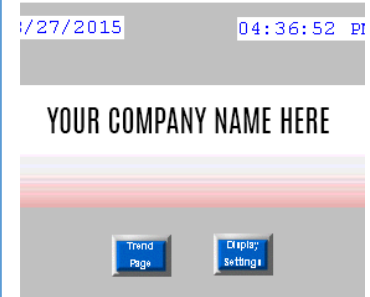
Displays measure data as waveforms. Displays each channel's scale value, industrial units, user messages, and other information.

Digital Display



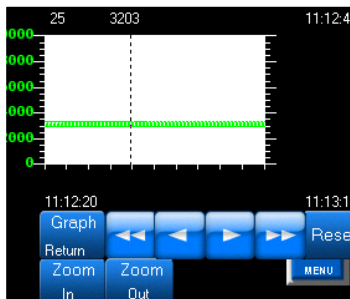
In addition to displaying measurements digitally, it displays channel/tag, industrial units, and alarm statuses.

Overview Display



Customize with your company name/logo branding.

Trend History



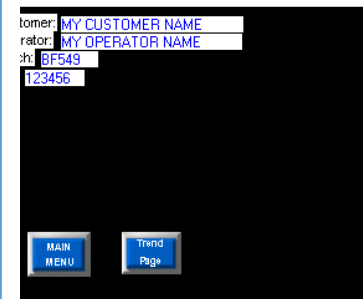
You can display log scales for degree of vacuum (pressure input), and record the data (option).

Sample List Data



You can view sample list data directly on the screen.

Data Entry

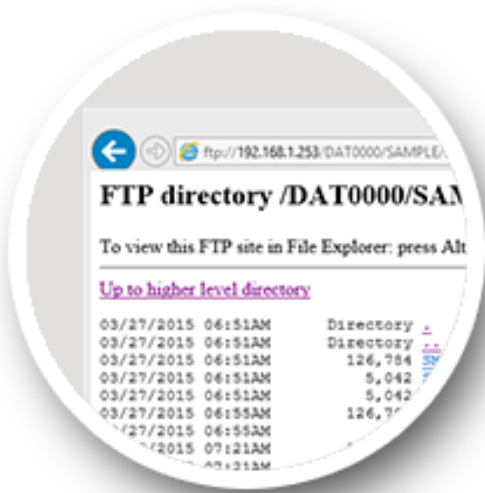
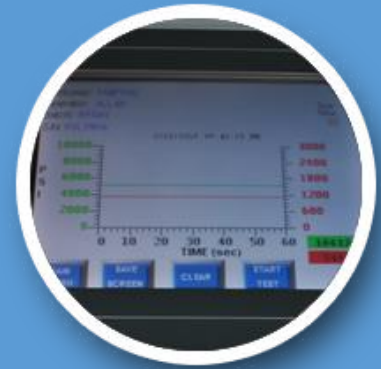


Customize the settings.

Intuitive Display, Easy Operation

Intuitive Operator Controls

All operations are handled on the Touchscreen. Easy to use navigation controls and data entry directly on Touchscreen. Simple start/stop data recording and graphing. User alarm setting.

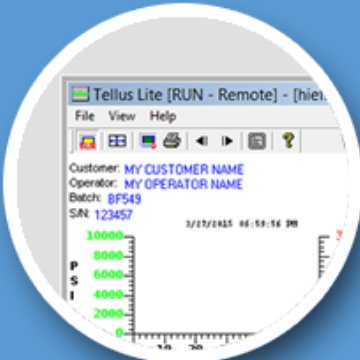


IE Browser Monitor Screen

Screen monitoring and operation is made easy via Ethernet.

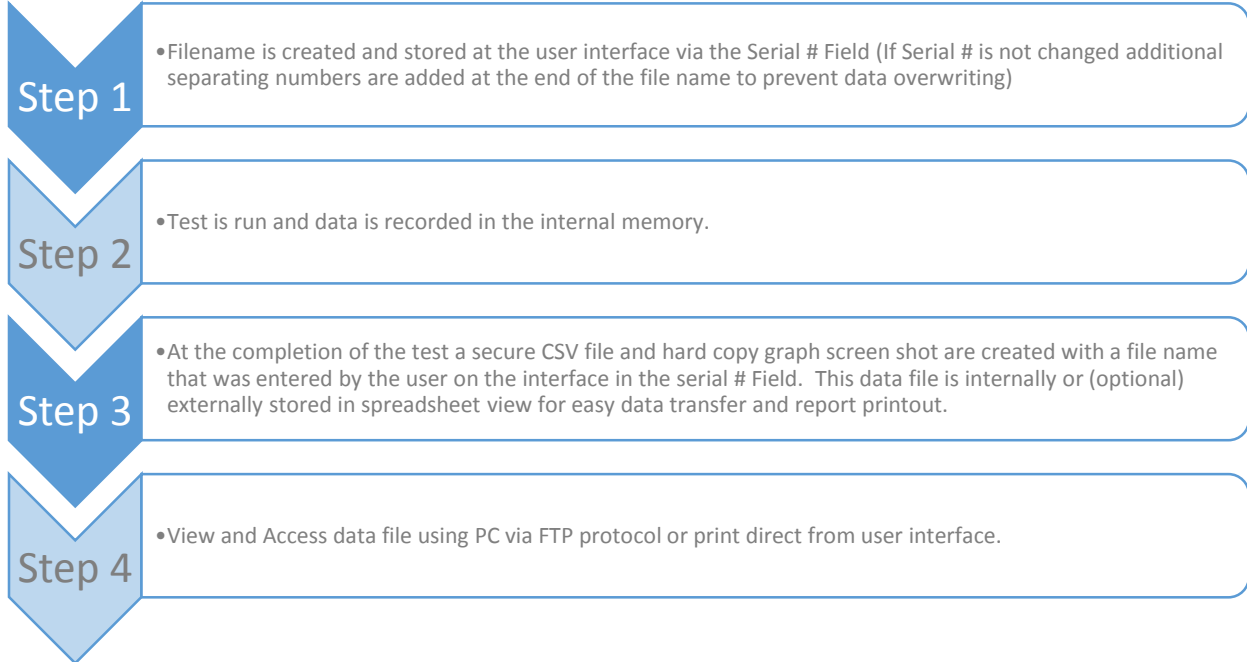
Reliable Data Storage

- :: Large (8GB) internal memory
- :: USB interface standard
- :: Binary data storage
- :: Network enables data redundancy
- :: Local print option allows for hard copy storage



High capacity internal memory

Standard 8GB non-volatile flash memory for secure, long term recording.



Ordering Information

Base Model

CODE	TYPE
HIEYV	Touch Screen Data Logger with Local Print
CODE	Display
-M57	5.7" QVGA Mono, Black & White
-V57	5.7" QVGA Standard, 64K Color
-S57	5.7" QVGA TFT, 64K Color
-V84	8.4" VGA TFT, 64K Color
-S84	8.4" SVGA TFT, 64K Color
CODE	Mounting Style
-F	Field mount/Panel/Wall
-P	Portable Case
CODE	Input (Add up to 8 Inputs from Table A)
/###	(See Table A)

TABLE A – Input Code

CODE	INPUT
NN	None
CC	Connector only
1	Pressure Sensor 1000 Psi Max (25' Cable Included)
5	Pressure Sensor 5000 Psi Max (25' Cable Included)
10	Pressure Sensor 10000 Psi Max (25' Cable Included)
15	Pressure Sensor 15000 Psi Max (25' Cable Included)
20	Pressure Sensor 20000 Psi Max (25' Cable Included)
30	Pressure Sensor 30000 Psi Max (25' Cable Included)
50	Pressure Sensor 50000 Psi Max (25' Cable Included)
75	Pressure Sensor 75000 Psi Max (25' Cable Included)
11	Pressure Sensor 100000 Psi Max (25' Cable Included)
RT	Temperature Input RTD (Connector Only)
TJ	Temperature Input T/C Type J (Connector Only)
TK	Temperature Input T/C Type K (Connector Only)
SS	Special Input (Contact Factory)

Accessories

PART #	DESCRIPTION
HIEFXCABLE25	25' Cable with Amphenol Connector on Both Ends